



NSL064



Version 1, Back

SIZES

Small (Medium, Large, X-Large, XX-Large)

MEASUREMENTS

Width 42 (44, 46, 48, 50)in/106 (112, 117, 122, 127)cm.

Length 23 (24, 25, 26, 27)in/58 (61, 63, 66, 68)cm.

MATERIALS

A pair of US 6/4mm knitting needles.

A pair of US 7/4.5mm knitting needles.

Coloured stitch markers.

Version 1 (shown on the cover)

2 [2, 2, 2, 3] x 50g skeins of Noro **Kureyon** in shade 102 Miyama (A).

5 [5, 5, 5, 5] x 50g skeins of Noro **Kureyon** in shade 92 Innoshima (B).

4 [5, 5, 5, 5] x 50g skeins of Noro **Kureyon** in shade 150 Inazawa (C).

Version 2

2 [2, 2, 2, 3] x 50g skeins of Noro **Kureyon** in shade 154 Saga (A).

5 [5, 5, 5, 5] x 50g skeins of Noro **Kureyon** in shade 124 Sanjō (B).

4 [5, 5, 5, 5] x 50g skeins of Noro **Kureyon** in shade 90 Isesaki (C).

TENSION

16 sts x 21 rows = 4in/10cm square measured over pattern using US 7/4.5mm needles.

ABBREVIATIONS

cm centimeters; **cont** continue; **dec** decrease(ing); **in** inch(es); **inc** increase(ing); **k** knit; **mm** millimeters; **p** purl; **patt** pattern; **rem** remain(ing); **RS** right side; **st(s)** stitch(es); **tog** together; **WS** wrong side.

INSTRUCTIONS**Back**

With US 6/4mm and shade C cast on 82 (86, 90, 94, 98) sts and work rib as follows:

Row 1 (RS): P2, * K2, P2, rep from * to end.

Row 2: K all K sts and P all P sts to end.

Rep the last 2 rows for a further 12 rows inc 1 st at each end of row 12. 84 (88, 92, 96, 100) sts.

Change to US 7/4.5mm needles and work patt as follows:

Row 1 (RS): With C, K42 (44, 46, 48, 50); with B, K42 (44, 46, 48, 50) sts.

Row 2: With B, P42 (44, 46, 48, 50); with C, P42 (44, 46, 48, 50) sts. Rep the last 2 rows for a further 13 (15, 17, 19, 21) rows.

Next row (WS): With B, P10 (12, 14, 16, 18) sts; work row 1 of heart graphic for 29 sts (working heart in shade A and surrounding sts in shade B); with B, P3 sts; with C, P3 sts; work row 1 of heart graphic for 29 sts (working heart in shade A and surrounding sts in shade C); with C, P10 (12, 14, 16, 18) sts.

Next row: With C, K10 (12, 14, 16, 18) sts; work row 2 of heart graphic for 29 sts; with C, K3 sts; with B, K3 sts; work row 2 of heart graphic for 29 sts; with B, K10 (12, 14, 16, 18) sts.

Cont in patt as set until the 31 rows of heart graph pattern have been worked.

Next row: With C, K42 (44, 46, 48, 50) sts; with B, K42 (44, 46, 48, 50) sts.

Next row: With B, P42 (44, 46, 48, 50) sts; with C, P42 (44, 46, 48, 50) sts.

Rep the last 2 rows for a further 4 rows.

Next row: With B, K42 (44, 46, 48, 50) sts; with C, K42 (44, 46, 48, 50) sts.

Next row: With C, P42 (44, 46, 48, 50) sts; with B, P42 (44, 46, 48, 50) sts.

Rep the last 2 rows for a further 4 (6, 8, 10, 12) rows.

Place a coloured marker at each end of the last row (indicates armholes.)

Patt 3 rows more.

Next row: With C, P10 (12, 14, 16, 18) sts; work row 1 of heart graphic for 29 sts (working heart in shade A and surrounding sts in shade C); with C, P3 sts; with B, P3 sts; work row 1 of heart graphic for 29 sts (working heart in shade A and surrounding sts in shade B); with B, P10 (12, 14, 16, 18) sts.

Next row: With B, K10 (12, 14, 16, 18) sts; work row 2 of heart graphic for 29 sts; with B, K3 sts; with C, K3 sts; work row 2 of heart graphic for 29 sts; with C, K10 (12, 14, 16, 18) sts.

Cont in patt as set until the 31 rows of graphic patt have been worked.

Next row: With B, K42 (44, 46, 48, 50) sts; with C, K42 (44, 46, 48, 50) sts.

Next row: With C, P42 (44, 46, 48, 50) sts; with B, P42 (44, 46, 48, 50) sts.

Rep the last 2 rows for a further 2 (4, 6, 8, 10) rows. **

Shape Shoulders

Row 1 (RS): Cast off 5 (5, 5, 5, 5) sts and knit to end.

Row 2: Cast off 5 (5, 5, 5, 5) sts and purl to end.

Rep the last 2 rows once more.

Row 5: Cast off 4 (5, 5, 5, 5) sts and knit to end.

Row 6: Cast off 4 (5, 5, 5, 5) sts and purl to end.



Version 2

- Row 7:** Cast off 4 (4, 5, 5, 5) sts and knit to end.
 - Row 8:** Cast off 4 (4, 5, 5, 5) sts and purl to end.
 - Row 9:** Cast off 4 (4, 4, 5, 5) sts and knit to end.
 - Row 10:** Cast off 4 (4, 4, 5, 5) sts and purl to end.
 - Row 11:** Cast off 4 (4, 4, 4, 5) sts and knit to end.
 - Row 12:** Cast off 4 (4, 4, 4, 5) sts and purl to end.
- Put rem 32 (34, 36, 38, 40) sts onto a st holder for neckband.

Front

With US 6/4mm needles and shade B, cast on 82 (86, 90, 94, 98) sts and work rib as given for Back, inc 1 st at each end of the last row. 84 (88, 92, 96, 100) sts.

Change to US 7/4.5mm needles and cont as given for Back up to **

Shape Front Neck & Shoulders

- Row 1:** Cast off 5 (5, 5, 5, 5) sts, knit until 29 (30, 31, 32, 33) sts on right hand needle. Turn and put rem sts on a spare needle.
- Row 2:** P2tog and purl to end.
- Row 3:** Cast off 5 (5, 5, 5, 5) sts, knit to the last 2 sts, K2tog.
- Row 4:** P2tog and purl to end.
- Row 5:** Cast off 4 (5, 5, 5, 5) sts, knit to the last 2 sts, K2tog.
- Row 6:** P2tog and purl to end.
- Row 7:** Cast off 4 (4, 5, 5, 5) sts, knit to the last 2 sts, K2tog.
- Row 8:** P2tog and purl to end.
- Row 9:** Cast off 4 (4, 4, 5, 5) sts, knit to the last 2 sts, K2tog.
- Row 10:** Purl to end.

Cast off rem 4 (4, 4, 4, 5) sts.

Return to the sts on the spare needle. Slip the centre 16 (18, 20, 22, 24) sts onto a st holder for neckband. With RS facing, rejoin yarn to rem 34 (35, 36, 37, 38) sts and complete to match first side reversing shapings.

Neckband

Join Right shoulder seam.

With RS facing, US 6/4mm needles and shade B, pick up and knit around neck edge as follows:

18 sts evenly down left front neck edge, 16 (18, 20, 22, 24) sts from st holder across centre front, 18 sts evenly up right front neck edge and 32 (34, 36, 38, 40) sts across back neck. 84 (88, 92, 96, 100) sts.

Work 17 rows in K2, P2, rib.

Cast off.

Join left shoulder and neckband seams **before** beginning the sleeves.

Left Sleeve

With US 7/4.5mm needles and shade C, pick up and K58 (60, 62, 64, 66) sts from coloured marker to coloured marker.

Next row: Purl to end.

Next row: Knit to end.

Rep the last 2 rows **AT THE SAME TIME** dec 1 st at each end of the next row and every foll 7th row until 36 (38, 40, 42, 44) sts rem. Work straight for 8 rows dec 2 (4, 2, 4, 2) sts evenly along the last row. 34 (34, 38, 38, 42) sts rem.

Change to US 6/4mm needles and work rib as given for Back for 14 rows.

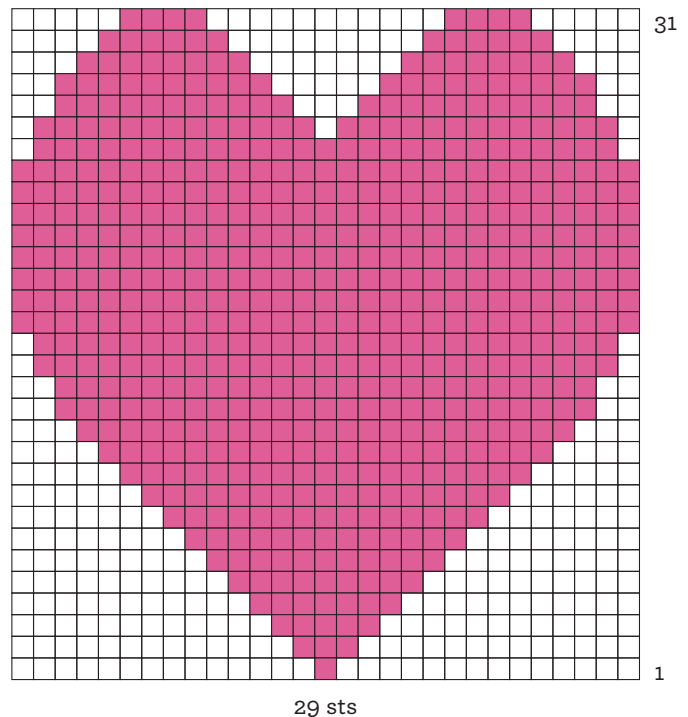
Cast off.

Right Sleeve

Work as given for Left Sleeve but using shade B.

Finishing

Sew up side and sleeve seams matching pattern. ■



Color Key ■ A □ B or C